

1920 N. Rangeline Road
Anderson, IN 46012
Phone: 765.643.5713
www.bethanyweb.org

Easter Worship Opportunities

March 20th Thursday Evening Experiential Communion Service

SUNDAY MORNING:
9:00 A.M.
Worship

Sunday School
Kids' Church
(It Rocks)

10:30 A.M.
Worship

Crossfire Student
Ministry Worship
Sunday School

We have a very special Thursday evening experience planned for you and/ or you and your family or LifeGroup to focus your attention on the events leading up to the death and resurrection of Jesus. You will be led, literally, to a number of hands-on experiences throughout the building that will incorporate Scripture, meditation, and reflection. You will experience this with a small group of people, which can be a grouping of several people who attend, a LifeGroup or SS class that decides to experience this together, or perhaps a couple of families joining together. Please make a special effort to join us Thursday night, March 20th, anytime between 6:30P.M. and 8:00P.M. Parents are encouraged to use this opportunity to share this experience with their children and use it as a time for teaching about the death and resurrection of Jesus. There will be a crib-room nursery available till 7:30P.M. A few notes about the evening:

- Please park in the south main lot and enter through the gym entrance
- Crib nursery is available until 7:30P.M.; those needing it are encouraged to come early
- Entire experience should take approx. 30-45 minutes
- 30 Pieces of Silver offerings can be brought and there will be a special time when those offerings can be given (see note about 30 Pieces of Silver in Bugle)

STAFF:

Bob Bell,
Senior Minister

David Coplin,
Worship

Tim Fair,
Student Ministries

Larry Lipps,
Families and Children

Larry Marshall,
Outreach and
Development

Kent Stookey,
Pastoral Care and
Involvement

March 23rd - Easter Sunday

6:30 - 7:15 A.M. - Special Interactive Sunrise Service & Breakfast

Join us for a family-style breakfast and worship experience!

(You can sign up in the Atrium or at bethanyweb.org)

7:30 - 8:45 A.M. Worship

9:00 - 10:30 A.M. Worship

10:30 - 11:45 A.M. Worship

No children's programming - infant care (The Garden) only during the 7:30 A.M. service. Full slate of children's programming during our regular service hours 9:00A.M. and 10:30A.M.

EVERY OPPORTUNITY BY BOB BELL

In Ephesians 5:15-16, Paul writes, *“Be very careful, then, how you live—not as unwise but as wise, making the most of every opportunity, because the days are evil.”* I have spent the past several weeks trying to pay more attention to “opportunities.” It is not an easy thing to do. It requires a good deal of work. I find myself running from place to place and task to task. Unfortunately, what is not on my list can seem like an obstacle. So, I am trying to reprogram my thinking. (This would not be an appropriate place for you to be thinking about “old dogs and new tricks.”)

Some people seem to do a much better job of having their antennas up. They regularly see and hear opportunities. Maybe it fits under the heading “everyone is different.” I am sure that might have something to do with it. However, to blame my inability on “everyone is different” seems more like an excuse than a reality. In fact, as I reread Paul’s words to the Ephesians, it appears to have something to do with being careful and being wise. I prefer the “everyone is different” angle.

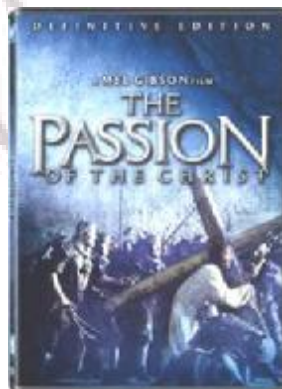
So what are these opportunities for which we should be watching? There are several options we could suggest: opportunities to do good, opportunities to extend grace, opportunities to help others, opportunities to love one another, opportunities to love God, love others and serve the world. But the opportunity I am speaking about today is the opportunity to speak on behalf of Jesus or the opportunity to help someone who is not a follower of Jesus to move a little closer to Him. You can call it evangelism, outreach, witnessing, inviting, sharing your faith or countless other titles, many of which scare us a little bit. I am thinking about opportunities God places before us to simply help move someone closer to Jesus.

This month, the calendar is working in our favor. If you check March 23rd on your calendar, you will see it is Easter. For most people who are not followers of Jesus, this is still a holiday. It might be more about family, candy, and Easter eggs than about Jesus, an empty tomb, and being a disciple, but it is still a holi-

day. I wonder what kind of opportunities will be present because of the calendar? Does this holiday provide an opportunity to ask a friend or co-worker about their plans for the holiday? Does Easter provide an opportunity for us to ask a family member to join us for worship and dinner? Do these conversations then provide an opportunity for those we talk with to ask us about our plans or about what we believe?

Join me. But do not just join me, keep track. What opportunities came your way? Upon which opportunities did you act? Were there opportunities presented that you did not really notice until after the fact? Were there opportunities that you prayerfully tried to create? Did you extend any invitations? Did you have any conversations?

The Parable of the Sower teaches us that it is our job to scatter the seed. It is our job to take advantage of opportunities. We do not always know which seed will take root or how the seed grows. It is our mission to sow the seed – to make the most of every opportunity.



WE'RE PROVIDING SEVERAL COPIES OF "THE PASSION OF THE CHRIST" RE-CUT EDITION FOR you to check out and use during the month of March. . Our hope is that those who haven't seen the film because of the violent nature will consider using

this version. It's a powerful film, and perfect reminder and thought-provoking tool during this special time of year. This would be great for families, life groups, SS classes, or a gathering with friends.

Copies are available in the Atrium on Sunday mornings, or in the church office during the week. Please make sure to sign them out and return so that others can take advantage of this powerful tool.

PEE WEE SEASON WAS A GREAT SUCCESS!

56 kids from ages 3 through kindergarten participated in pee wee basketball this season. These youngsters met every Saturday morning in February. Along with learning the basics of basketball, they also have a devotion time and of course snacks!

Beth Sperry, the leader of the team, said "A Huge thank you to all the volunteers!" Here is a list of all who helped: Mandy & Shane Martin, Mike Gongwer, Larry Weaver, Aaron Reger, Stephanie Bartlett, Andrew Schuck, Darin Nelson, Steve Sperry, Craig Nixon, Mark & Patty Hahn, Mike McFall, and Jan Hoch. Lucas Martin, Elijah Hahn, Camden Gongwer, and Anna Sperry were also big helpers. Larry Gibson took team pictures and gave each child a 4x6 picture. Sharel Marcum donated drinks. Bret Busby was the announcer for the awards ceremony. Kent Stookey, Larry Marshall, and Dave Coplin did devotions. Don Vanderluit and David Carpenter made sure the sidewalks were clear of ice. Janet Jenkins and Tracy Odom helped with office details. Another successful season under our wing!



Winter Carnivale



576 pieces of pizza, 400 hotdogs,
414 bags of chips, 250 volunteers,
14 game booths, 1000 prizes given

=

200 families enjoying a safe, fun



BIG GAME FOOTBALL PARTY FOR AREA HOMELESS SHELTERS

We had a great night during the recent Super Bowl party, and not just because of the outcome of the game! We had a full room of guests from the Mustin Shelter, Christian Center, and Stepping Stones. Thanks to all who donated food & funds & time to make the night a very cool event. Lots of great ministry took place that night during the conversations that took place.

THE
BETHANY
BUGLE

THE **Bugle**

(USPS 106-930), published monthly by Bethany Christian church, 1920 North Rangeline, Anderson, IN 46012-9666. Periodicals Postage paid at Anderson, IN. POSTMASTER: Send address changes to: THE BETHANY BUGLE, 1920 North Rangeline Rd, Anderson.

VOLUME XXXIII, ISSUE 3

BUGLE

MARCH 2008

30 Pieces of Silver changed the world as we know it. Let your 30 Pieces of Silver change someone's world.

This year during the Easter season, we're providing an opportunity to each person who is willing to participate in a 30 Pieces of Silver offering. During the month of March, we'll make available small drawstring bags with attached instructions to anyone who would like to participate. This is a terrific teachable moment for children. Simply collect 30 pieces of change, any denomination, and bring along to the special Thursday Night Experiential Communion Service on March 20th. There will be a specific time when those offerings can be given. In addition, your 30 Pieces of Silver can be placed in the offering plate during the month of March, and will be added to the total. Our plan is to use the entire collection to radically change the life of a community in Africa by helping to provide them with a well that will give them an abundant supply of clean water. Unsafe drinking water is one of the most preventable killers in our world today, and we're planning to partner with Blood:Water Mission to make a difference and change someone's world. Watch for a display in the Atrium with more details about our 30 Pieces of Silver offering. Find out more at www.bloodwatermission.com

JANUARY STATISTICS:

January Offering Received.....	\$56,556.29
Average Offering per week.....	\$14,139.07
Percent of Monthly Budget.....	86%

YEAR-TO-DATE

Budgeted offering needed.....	\$65,496.48
Actual y-t-d offering received	\$56,556.29
Budgeted weekly average offering needed.....	\$16,346.15
Actual weekly average offering per week.....	\$14,139.07
Deficit to budget (year-to-date).....	(\$8,940.19)
Percent of budget (year-to-date).....	86%

2008 FAITH PROMISE GIVING UPDATE

Total funds sent to C.M.F for support of the		
Kineman Family:	January	YTD
From Individuals:	\$4,372.00	\$4,372.00
From Missions:	<u>\$1,100.00</u>	<u>\$1,100.00</u>
Total:	\$5472.00	\$5472.00

2008 IMAGINE #2 GIVING UPDATE

January 2008.....	\$5,522.75
Total given in 2008.....	\$5,522.75
Total campaign gifts.....	\$75,910.40

If you are interested in giving and would like envelopes, please contact the church office. We also can set up automatic withdrawal and bill pay.

